

CYNGOR SIR CEREDIGION COUNTY COUNCIL

Adroddiad i'r: Cabinet

Dyddiad y Cyfarfod: 03 Medi 2024

Teitl: Gwasanaeth y Gaeaf

Pwrpas yr adroddiad: I gytuno ar y rhwydwaith cyn-driniaeth ddiwygiedig sy'n deillio o'r adolygiad o'r Matrics Asesu Cyn-driniaeth a gymeradwywyd Pwyllgor Trosolwg a Chraffu Cymunedau Ffyniannus ar 11 Gorffennaf 2024

Er: Penderfyniad

Portffolio Cabinet ac Aelod Cabinet:

Y Cynghorydd Keith Henson, Aelod Cabinet ar gyfer Priffyrdd a Gwasanaethau Amgylcheddol a Rheoli Carbon

Cyflwyniad

Ar 4 Medi 2018 (C70) cytunodd y Cabinet i'r argymhellid i gymeradwyo cynnydd yn y gyllideb ar gyfer y gwasanaeth cynnal a chadw yn y gaeaf er mwyn hwyluso'r broses o drin pob llwybr sy'n sgorio +2 neu uwch, a fydd gyfystyr â thrin ymlaen llaw 463.1km o hyd cyffredinol y rhwydwaith ffyrdd sirol.

Cytunwyd yng nghyfarfod y Pwyllgor Trosolwg a Chraffu Cymunedau Ffyniannus a gynhaliwyd yn Siambr y Cyngor, Neuadd Cyngor Ceredigion, Penmorfa, Aberaeron ac o bell ddydd Llun, 31 Gorffennaf 2023 y dylai'r swyddogion gynnal adolygiad cynhwysfawr o Wasanaeth y Gaeaf yn barod ar gyfer gaeaf 2024/25.

Mae gwybodaeth am y papurau a gyflwynwyd ar gael yma: [Adroddiad Craffu - Gwasanaeth y Gaeaf 11.07.24](#) a darperir crynodeb isod:

Cwtogiadau Costau / Pwysau Cyllidebol:

Cyllideb Gwasanaeth y Gaeaf yn 2023/24 oedd £232,000.

Ar 29/02/24, pennodd Cyngor Sir Ceredigion ei gyllideb ar gyfer 2024-2025 ac roedd y cynigion hyn yn cynnwys gostyngiad o £25k yn y gyllideb ar gyfer Gwasanaeth y Gaeaf, ac felly ar gyfer 2024-25 mae'r gyllideb hon wedi'i lleihau £25,000 i £207,000, gostyngiad o 11%.

Cynigion Cyllidebol/ Arbedion Costau:

Er mwyn lliniaru cymaint ag y bo modd y pwysau costau a osodwyd gan doriadau cyllideb a phwysau chwyddiant, roedd y Gwasanaeth yn cynnig bod y mesurau canlynol yn cael eu ystyried.

1. Adolygu'r parthau ar gyfer rhagolygon tywydd gwasanaeth y gaeaf. Ar hyn o bryd mae tri pharth ac argymhellir cynyddu'r parthau hyn i bedwar. Bydd cyflwyno parth arfordirol yn arwain at lai o gamau/rhediadau ar hyd y llwybrau o fewn y parth hwnnw oherwydd effaith gynhesol y môr. Daw'r arbedion hyn o leihau amser gyrru

a lleihau'r halen a diesel a ddefnyddir, gan gynnwys llai o draul ar y peiriannau. Nid oes gofyn cael argymhelliad/cymeradwyaeth, penderfyniad gweithredol yw hwn.

2. Cael gwared ar Lwybr 5 Gogledd (R5N). Ar hyn o bryd, mae'r llwybr hwn yn cael ei drin ymlaen llaw gan ddefnyddio cerbyd bach. Mae'r adolygiad wedi pennu bod cerbyd graeanu maint llawn Llwybr cyfagos 2 Gogledd (R2N) yn medru trin y ddau lwybr ymlaen llaw. Mae'r C1001 (Cyffordd Rhiw Briallu â'r A44 yn Llanbadarn Fawr hyd Gyffordd Capel Dewi â'r A4159 sy'n cysylltu â'r C1004 Waunfawr a'r C1007 Comins Coch) wedi cael ei hasesu fel dau lwybr. C1001A (A44 i'r gyffordd â'r C1007 a chyffordd yr C1001C â'r C1007 a'r gyffordd â'r A4159). Nid oes gofyn cael argymhelliad/cymeradwyaeth oherwydd penderfyniad gweithredol, yn unol â Pholisi Gwasanaeth y Gaeaf, yw cael gwared ar y C1001C o'r rhwydwaith llwybrau rhagofalus sy'n cael ei drin ymlaen llaw. Mae hyn oherwydd ei sgôr asesiad o -7 sydd islaw'r sgôr trothwy o +1.
3. Lleihau'r trothwy ar gyfer trin ymlaen llaw y llwybrau rhagofalus a hynny o +1°C i +0.5°C. Mae Ceredigion, a llawer o awdurdodau eraill ar hyn o bryd, yn defnyddio rhagolwg tymheredd o +1°C a llai i benderfynu a ddylid trin y rhwydwaith rhagofalus ymlaen llaw. Nid oes gofyn cael argymhelliad/cymeradwyaeth oherwydd penderfyniad gweithredol yw hwn. Hynny yw, os bydd rhagolwg ymylol o rhwng +0.5°C a +1°C gyda hyder Uchel yn unig, ni chymerir camau i drin y rhwydwaith rhagofalus ymlaen llaw.

Yng nghyfarfod y Pwyllgor Trosolwg a Chraffu Cymunedau Ffyniannus a gynhaliwyd ar 11 Gorffennaf 2024, cytunwyd i argymhell y dylai'r Cabinet gymeradwyo'r matrices asesu diwygiedig er mwyn cyd-fynd â'r Cod Ymarfer newydd cymeradwy ar gyfer y Polisi Arolygu Diogelwch Priffyrdd a Chywiro Diffygion. Mae hwn yn cynnig cydymffurfiaeth uwch a chadarn i'r Cyngor o ran ei ddyletswydd o dan Adran 41(1) o'r Ddeddf Priffyrdd (1980), gyda'r sgôr newydd o +1 fel y trothwy ar gyfer penderfynu ynghylch hyd y llwybrau sy'n cael eu trin ymlaen llaw, yn dilyn adolygiad.

Llesiant Cenedlaethau'r Dyfodol:

Oes Asesiad Effaith Integredig wedi ei gwblhau? Os na, esboniwch pam

Nac oes. Man newidiadau mae'r Cyngor yn cynnig i'w rwydwaith cyn-driniaeth.

Crynodeb o'r Asesiad Effaith Integredig:

Hirdymor:	Amherthnasol
Cydweithio:	Amherthnasol
Cynnwys:	Amherthnasol
Atal:	Amherthnasol
Integreiddio:	Amherthnasol

Argymhelliad / Argymhellion:

Cymeradwyo'r matrices asesu diwygiedig (Atodiad B).

Rheswm / Rhesymau dros y penderfyniad:

Er mwyn sicrhau bod yr Awdurdod yn parhau i fodloni ei ofynion mewn perthynas â hyd y llwybrau cynnal a chadw cyn-drin yn y gaeaf yn dilyn meini prawf uchder.

Trosolwg a Chraffu:

Matrics Asesu wedi'i gytuno gan y Pwyllgor Trosolwg a Chraffu Cymunedau Ffyniannus ar 11 Gorffennaf 2024.

Fframwaith Polisi:

Strategaeth Ariannol Tymor Canolig
Cynllun Gwasanaeth y Gaeaf

Amcanion Llesiant Corfforaethol:

- Hybu'r economi, cefnogi busnesau a galluogi cyflogaeth
- Creu cymunedau cynaliadwy a gwyrdd sydd wedi'u cysylltu'n dda â'i gilydd

Goblygiadau Cyllid a Chaffael:

Gwireddu'r arbedion o £25,000 a nodwyd fel rhan o'r broses Gosod Cyllideb 24/25.

Goblygiadau cyfreithiol:

Deddf Priffyrdd 1980

Goblygiadau staffio:

Dim

Goblygiadau eiddo / asedau:

Dim

Risg(iau):

Pwerau Statudol:

Deddf Priffyrdd 1980

Papurau Cefndir:

Adroddiad i'r Pwyllgor Trosolwg a Chraffau Cymunedau Ffyniannus 11.07.24-
[Adroddiad Craffu - Gwasanaeth y Gaeaf 11.07.24](#)

Atodiadau:

ATODIAD A - Cod Ymarfer ar gyfer Archwiliadau Diogelwch Ffyrdd

1. Y Cod: [Cod Ymarfer Archwiliadau Diogelwch ar Ffyrdd Sirol a'r Ymateb 2021](#)
2. Pwyllgor Trosolwg a Chraffu Cymunedau Ffyniannus 15.07.21:
[Adroddiad Craffu - 15 Gorffennaf 2021](#)
Crynodeb: [Crynodeb 2021 \(ceredigion.gov.uk\)](#)
Cofnodion: <https://cyngor.ceredigion.gov.uk/documents/g202/Cofnodion>
3. Cofnodion cymeradwyo'r Cabinet 07.09.21:
<https://cyngor.ceredigion.gov.uk/documents/g171/Cofnodion>

ATODIAD B - 2024 Cymhariaeth y Matrics Asesu

ATODIAD C - Sgôr Asesu 2024

ATODIAD D - Parthau Rhagolygon

ATODIAD E - Map

ATODIAD F - Asesiad Llwybrau

Swyddog Arweiniol Corfforaethol:

Rhodri Llwyd, Swyddog Arweiniol Corfforaethol: Gwasanaethau Priffyrdd ac Amgylcheddol

Swyddog Adrodd:

Phil Jones, Rheolwr Corfforaethol: Gwasanaethau Priffyrdd

Dyddiad:

05 Awst 2024

ATODIAD B - 2024 CYMHARIAETH Y MATRICS ASESU

ROUTE ASSESSMENT 2024 Route A123					ROUTE ASSESSMENT 2023- Route A123					
Item no.	Characteristic	Requirements		Score	Route A123	Item no.	Characteristic	Requirements	Score	Route A123
1	Impact on the Network	CoP Hierarchy				1	Impact on the Network			
1.1	Traffic Volume Flows	CH1	10,000 - 20,000	2		1.1	Strategic Impact	strategic routes	2	
		CH2	5,000 - 10,000	1				other B made	1	
		CH3	1,000 - 5,000	0				C class roads	0	
		CH4	200 - 1,000	-1				Unclassified	-1	
		CH5	< 200	-2				Boats etc	-2	
1.2	Transport Links, service buses, popular HGV route, eg milk tankers	regular bus service or HGV route		2		1.2	Transport Links, service buses, popular HGV route, eg milk tankers	regular bus service or HGV route	2	
		Main access to Bus Depot		2				Main access to Bus Depot	2	
		Infrequent local bus service or HGV rt		1				Infrequent local bus service or HGV rt	1	
		taxi links, occasional HGV route		0				taxi links, occasional HGV route	0	
		no service rare HGV		-2				no service rare HGV	-2	
1.3	Link to other County	where treated by neighbour county		2		1.3	Traffic Flows	>1000 vehicles/ day	2	
		others		0				800 - 1000	1	
2	Impact on the Community					1.4	Link to other County	where treated by neighbour county	2	
2.1	Size of settlement	>500 properties		2		2	Impact on the Community			
		250 - 500 properties		1				>500 properties	2	
		50 - 250 properties		0				250 - 500 properties	1	
		<50 properties		-2				50 - 250 properties	0	
2.2	Proximity of emergency facility	adjacent to or main access		2		2.1	Size of settlement	<50 properties	-2	
		other		0				adjacent to or main access	2	
2.3	Severance of settlement from main network	single access to settlement		2		2.2	Proximity of emergency facility	other	0	
		where alternative exists		0				severance of settlement from main network	2	
2.4	Maintain continuity	existing routes		2		2.3	Severance of settlement from main network	where alternative exists	0	
		others		0				existing routes	2	
2.5	Adjacent to school on an incline without footway provision	complies with criteria		2		2.4	Maintain continuity	others	0	
		does not comply with criteria		0				Adjacent to school on an incline without footway provision	2	
3	Economic Factor					2.5	Adjacent to school on an incline without footway provision	does not comply with criteria	0	
3.1	Access to major employment centre (Industrial Estate, Hospital, School, Offices etc)	single or main access, >50 employees		2		3	Economic Factor			
		single or main access, 25 - 50 employees		1		3.1	Access to major employment centre (Industrial Estate, Hospital, School, Offices etc)	single or main access, >50 employees	2	
		alternative access		0				single or main access, 25 - 50 employees	1	
		no employment centre		-2				alternative access	0	
single or main access to		2		no employment centre	-2					
3.2	Access to centre of distribution or retail	alternative access		0		3.2	Access to centre of distribution or retail	single or main access to	2	
		no centre of dist. or retail		-2				alternative access	0	
								no centre of dist. or retail	-2	
4	Impact on Safety					4	Impact on Safety			
4.1	Risk Assessment 3 x 2 matrix	score of 6		2		4.1	Risk Assessment 3 x 2 matrix	score of 6	2	
		score of 5		1				score of 5	1	
		score of 4		0				score of 4	0	
		score of 3		-1				score of 3	-1	
		score of 2		-2				score of 2	-2	
4.2	Accident records	assess accident data		2		4.2	Accident records	assess accident data	2	
		no accidents		0				no accidents	0	
4.3	Topographical Factor (Altitude above sea level)					4.3	Topographical Factor (Altitude above sea level)			
	High Mountainous Routes	>=300m		2			High Mountainous Routes	>=300m	2	
	Highland routes	>=200m and <300m		1			Highland routes	>=200m and <300m	1	
	Medium high routes	>=100m and <200m		0			Medium high routes	>=100m and <200m	0	
	Valley inland routes	>=50m and <100m		-1			Valley inland routes	>=50m and <100m	-1	
	Lowland routes	<50m		-2			Lowland routes	<50m	-2	
5	NMWTRA alternative routes					5	NMWTRA alternative routes			
5.1		route forms part of NMWTRA alternative route		2		5.1		route forms part of NMWTRA alternative route	2	
		route does not form part of NMWTRA alternative route		0				route does not form part of NMWTRA alternative route	0	
					0					0

ATODIAD C – SGÔR ASESU 2024

Assessment Scoring 2024 with continuity Traffic Counts				1
Road No.	Description	Length km	Assessment score	cumulative distance (km)
A486A	Llandysul By-Pass to Synod Inn	17.3	17	
	total length	17.3		17.3
Road No.	Description	Length km	Assessment score	
A475B	Horeb Jct to Lampeter, Harford Square	20.6	16	
A482	Aberaeron - Cwmanne Square	22.4	16	
A484	Cardigan - Cearnth	14.4	16	
	total length	57.4		74.7
Road No.	Description	Length km	Assessment score	
A485A	Llanfarian - Tregaron	24.4	15	
	total length	24.4		99.1
Road No.	Description	Length km	Assessment score	
A475A	Adpar at roundabout on bridge - Horeb Jct	9.7	14	
A485B	Lampeter - Tregaron	19.5	14	
B4333A	Adpar - Tanygroes	9.9	14	
A4120B	Southgate Roundabout to Morrison's Roundabout	0.59	14	
	total length	39.7		138.8
Road No.	Description	Length km	Assessment score	
A4120A	A44(T) Llanbadarn roundabout - Morrison's Roundabout	0.8	13	
	total length	0.8		139.6
Road No.	Description	Length km	Assessment score	
A486B	Synod Inn to New Quay Jct with Hill street	6.9	12	
	total length	6.9		146.5
Road No.	Description	Length km	Assessment score	
B4546	Pentwd Roundabout - Cardigan Bridge	0.5	11	
CLASS 3	Morrison's Roundabout - Mill St (Boulevard St Bric)	1.61	11	
	total length	2.1		148.6

Assessment Scoring 2024 with continuity Traffic Counts				2
Road No.	Description	Length km	Assessment score	cumulative distance (km)
B4337A	Market Square Llanybydder - Llanwnen	6.6	10	
C111	Cardigan Streets	1.6	10	
B4576	Abermad - Llangwyrfon- Bethania	15.7	10	
	total length	23.9		172.5
Road No.	Description	Length km	Assessment score	
A4159	Bow Street - Lovesgrove	3.49	9	
B4571	Adpar - Ffostrasol	10.1	9	
B4343A	Cwmanne - Llanddewi Brefi- Tregaron	17.2	9	
	total length	30.8		203.3
Road No.	Description	Length km	Assessment score	
B4333B	Tanygroes - Blaenannerch	6.7	8	
A4120C	A487(T) Jct Southgate to Ponterwyd	22.27	8	
B4343B	Tregaron - Ponrhydfendigaid	9	8	
	total length	38.0		241.3
Road No.	Description	Length km	Assessment score	
B4577A	Aberarth - Cross Inn - Bethania	12.6	7	
UT 6	Llyn y fran Road Jct B4624 to Jct B4624	1.9	7	
U/C	Junction A475 - Peterwell Terrace Lampeter	0.35	7	
A478	Glanpwllafon county Boundary to Ridgeway Roundabout	1.65	7	
	total length	16.5		257.8
Road No.	Description	Length km	Assessment score	
B4343C	Ponrhydfendigaid - Devil's Bridge	14	6	
B4337C	Temple Bar - Llanrhystud	18.1	6	
B4574A	Devil's Bridge - Jct B4574B/C1118 Cwm Ystwyth - turning point	7.6	6	
B4577B	Bethania - Tyncelyn	7.8	6	
C1010B	Gogerddan Xrds(A4159) - Penrhyncoch PO	1.78	6	
C1/C2	Hill St & Park St New Quay	0.3	6	
C1004	Penglais - Waunfawr - Lluest Jct	1.19	6	
B4624A	County boudnary (old bridge) to Groesfordd Roundabout.	2.75	6	
	total length	53.5		311.3

Assessment Scoring 2024 with continuity Traffic Counts				3
Road No.	Description	Length km	Assessment score	cumulative distance (km)
B4338D	Talgarreg - Synod Inn	4.4	5	
B4337B	Llanwnnen - Temple Bar	8.5	5	
C1001A	Jct C1007 Commins Coch - Llanbadarn	1.6	5	
B4624B	New Road, Llandysul	0.6	5	
B4342C	New quay - Llanarth	4.8	5	
U/C	Panteg Road Aberaeron	0.7	5	
C1028	Glanyrafon - Factory Bridge	0.84	5	
B4321	Llangrannog - Pentregat	6.5	5	
B4338B	Drefach - Cwrtnwydd	2.66	5	
B4340	Southgate - Pontrhydfendigaid	21.6	5	
	total length	52.2		363.5
Road No.	Description	Length km	Assessment score	
B4334A	Henllan - Aberbanc	2.1	4	
B4459A	Llanfihangel - Rhydowen	6.61	4	
C1016	Penrhynoch PO - Jct C1013/Pengar turn around	1.58	4	
ZU3423	Station Road leading to Pentood Industrial/Retail Estate	0.26	4	
	total length	10.6		374.0
Road No.	Description	Length km	Assessment score	
B4353	Bow Street - Borth - Treddol	13.6	3	
B4572A	Llangorwen x-roads - penglais hill	2.5	3	
B4459B	Rhydowen - Talgarreg	6.85	3	
B4342A	Talsarn - Llangeitho - Trecefel	14.30	3	
UC	Alban Square	0.32	3	
C1007	Jct C1001 via Commins - Dorglwyd	0.98	3	
B4334C	Penrhiwpal - Brynhoffnant	6.85	3	
	total length	45.4		419.4
Road No.	Description	Length km	Assessment score	
B4548	Cardigan - Gwbert	4.5	2	
B4546	Ty- Johnny - Cardigan	0.95	2	
B4346	Pier St., Marine Terrace, North Rd.	1.28	2	
B4342D	Llanarth - Ystrad Aeron	15.3	2	
	Rhodfa'r Felin Cardigan	0.87	2	
B4338C	Cwrtnwydd - Talgarreg	9.2	2	
	total length	32.1		451.5

Assessment Scoring 2024 with continuity Traffic Counts 4

Road No.	Description	Length km	Assessment score	cumilative distance (km)
UC	Market St.	0.16	1	
C1003	Gwndwngwyn - Radar Bend	1.2	1	
B4343D	Tynffordd - Dyffryn Castell (splash)	2.9	1	
C1024	Radar Bend - Trem Y Bae	2.3	1	
	total length	6.6		458.1

Agosaf at y llwybr rhwydwaith cyn-driniaeth presennol mewn cilomedrau (463.1)

Road No.	Description	Length km	Assessment score	
B4570	Manarafon - Cwm Cou	13.7	-1	
	total length	13.7		471.8

Road No.	Description	Length km	Assessment score	
B4334B	Aberbanc - Penrhiwpal	5	-2	
	total length	5.0		476.8

Road No.	Description	Length km	Assessment score	
B4342B	Felinfach - Hendrelas	1.48	-3	
B4338A	Highmead - Drefach	3.1	-3	
UC	Caradog Road	0.40	-3	
C1047	Cilcennin	4	-3	
C1008	Llangeitho - B4578 jct Llwyncolfa	4.31	-3	
	total length	13.3		490.1

Road No.	Description	Length km	Assessment score	
B4339	Ciliau Aeron PO - Hall	0.30	-4	
C1069	Bwlchygroes - Brynhelyg	2	-4	
C1064	Llanafan	2.4	-4	
	total length	4.7		494.8

Road No.	Description	Length km	Assessment score	

Assessment Scoring 2024 with continuity Traffic Counts **5**

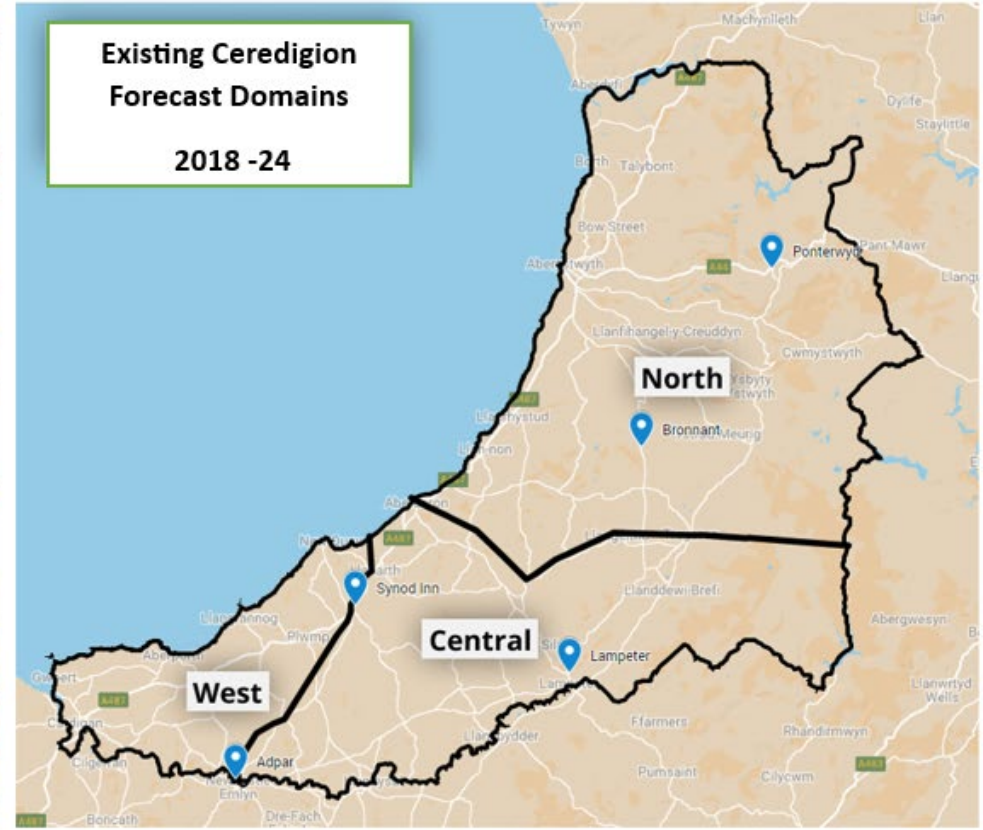
Road No.	Description	Length km	Assessment score	cumulative distance (km)
C1009	Aberporth - Tresaith	4.1	-5	
B4574B	Cwm Ystwyth - Pontrhydygroes	3.7	-5	
C1066	Brongest	5	-5	
C1152	Trefenter	2.5	-5	
B4339	Ciliau Aeron Hall - Dihewyd	3.75	-5	
C1003	Gwbert - Radar Bend	3	-5	
C1048	Caerwedros / Llwyndafydd	4.5	-5	
C1331	Church Road, Llanbadarn	0.25	-5	
	total length	26.8		521.6

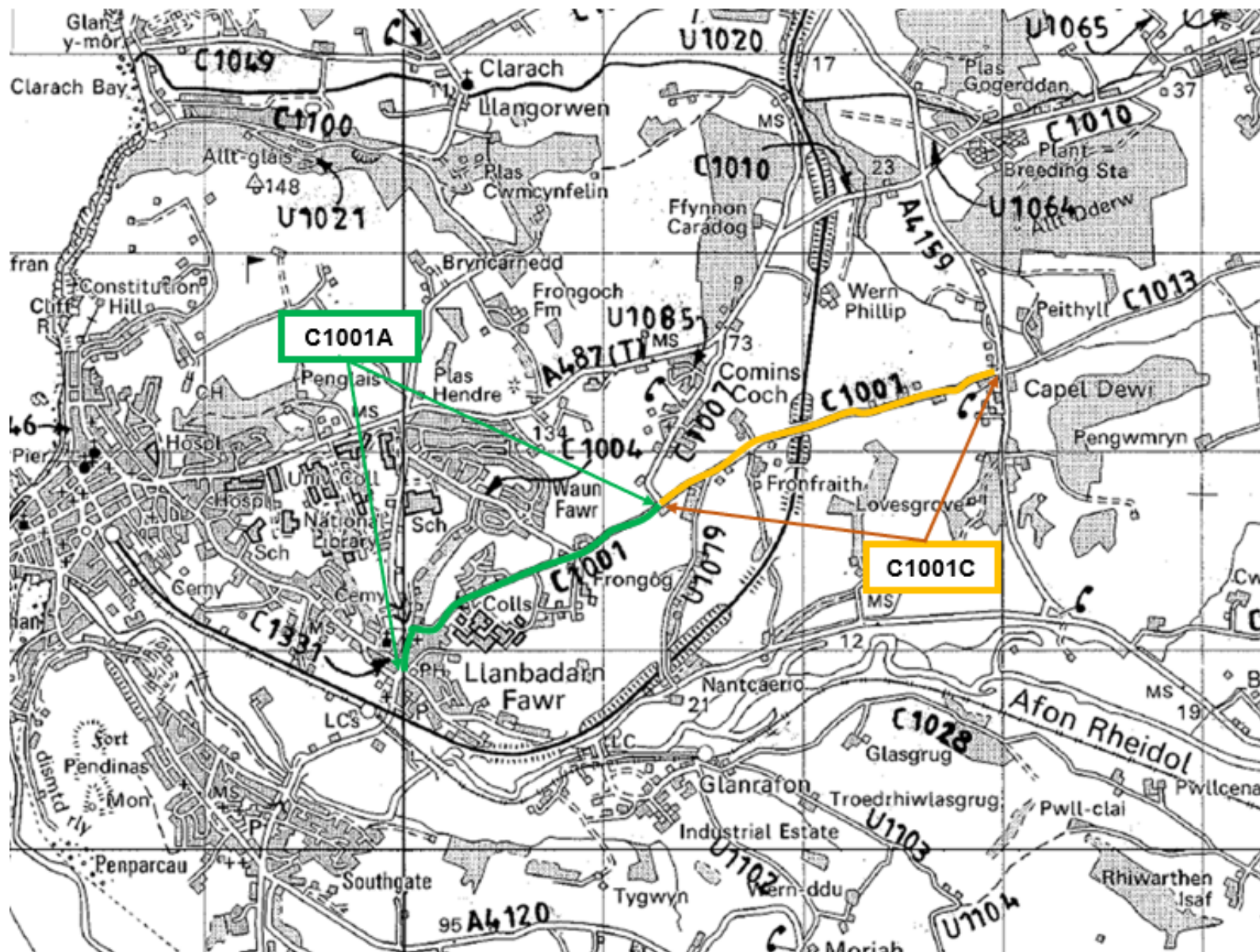
Road No.	Description	Length km	Assessment score	
B4575	Llanilar - Trawscoed	5.2	-6	
B4572	Ty Du - Borth	1.79	-6	
C1022	Pontrhydygroes Brdg - Abermagwr / new row	8.8	-6	
C1049A	Black lion - Llangorwen	2.19	-6	
C1010C	Penrhynoch - Pen y Cwm	1.58	-6	
C1002	Blaenpennal/Bontnewydd	4	-6	
C1025	Capel Bangor Church - Rheidol Pwr St	6.62	-6	
	total length	30.2		551.8

Road No.	Description	Length km	Assessment score	
C1282	Rhiw goch, Aberaeron	1.6	-7	
B4576	Penuwch - Bwlchyllan - Hafod Xrds	5.8	-7	
C1033	Cwrtnewydd - Alltybig (Cwmsychbant)	2.7	-7	
C1026	Llanddewi to Pont Llanio	1.5	-7	
C1005	Swyddffynnon Road	7.5	-7	
C1013	Garth jct - Loop to Capel Dewi Jct	11.2	-7	
C1128	Bwlch Llan - Cipyll	1.97	-7	
C1039	Pentrellwyn, Llandysul	2	-7	
C1001C	Jct C1007 Commins Coch - Capel Dewi	1.9	-7	
	total length	36.2		587.9

Road No.	Description	Length km	Assessment score	
B4578	Tyncelyn - Llanio	6.70	-8	
C1076	Hendre Quarry Road ystradmeurig to Ysbytu Ystwyth	7	-8	
C1115	Pontrhydygroes to Llanafan	7	-8	
	total length	20.7		608.6

ATODIAD D – PARTHAU RHAGOLYGGON





ATODIAD F – ASESIAID LLWYBRAU

ROUTE ASSESSMENT 2024 Route C1001C					
Item no.	Characteristic	Requirements		Score	Route C1001C
1	Impact on the Network				
1.1	Traffic Volume Flows	CoP Hierarchy	Traffic Band		
		CH1	10,000 - 20,000	2	
		CH2	5,000 - 10,000	1	
		CH3	1,000 - 5,000	0	
		CH4	200 - 1,000	-1	-1
CH5	< 200	-2			
1.2	Transport Links, service buses, popular HGV route, eg milk tankers	regular bus service or HGV route		2	
		Main access to Bus Depot		2	
		Infrequent local bus service or HGV rt		1	
		taxi links, occasional HGV route		0	
		no service rare HGV		-2	-2
1.3	Link to other County	where treated by neighbour county		2	
		others		0	
2	Impact on the Community				
2.1	Size of settlement	>500 properties		2	
		250 - 500 properties		1	
		50 - 250 properties		0	
		<50 properties		-2	-2
2.2	Proximity of emergency facility	adjacent to or main access		2	
		other		0	0
2.3	Severance of settlement from main network	single access to settlement		2	2
		where alternative exists		0	
2.4	Maintain continuity	existing routes		2	2
		others		0	
2.5	Adjacent to school on an incline without footway provision	complies with criteria		2	
		does not comply with criteria		0	0
3	Economic Factor				
3.1	Access to major employment centre (Industrial Estate, Hospital, School, Offices etc)	single or main access, >50 employees		2	
		single or main access, 25 - 50 employees		1	
		alternative access		0	
		no employments centre		-2	-2
3.2	Access to centre of distribution or retail	single or main access to		2	
		alternative access		0	
		no centre of dist. or retail		-2	-2
4	Impact on Safety				
4.1	Risk Assessment 3 x 2 matrix	score of 6		2	
		score of 5		1	
		score of 4		0	
		score of 3		-1	-1
		score of 2		-2	
4.2	Accident records	assess accident data		2	
		no accidents		0	0
4.3	Topographical Factor (Altitude above sea level)				
	High Mountainous Routes	>=300m		2	
	Highland routes	>=200m and <300m		1	
	Medium high routes	>=100m and <200m		0	
	Valley inland routes	>=50m and <100m		-1	-1
	Lowland routes	<50m		-2	
5	NMWTRA alternative routes				
5.1		route forms part of NMWTRA alternative route		2	
		route does not form part of NMWTRA alternative route		0	0
					-7

ROUTE ASSESSMENT 2024 Route C1001A					
Item no.	Characteristic	Requirements		Score	Route C1001A
1	Impact on the Network				
1.1	Traffic Volume Flows	CoP Hierarchy	Traffic Band		
		CH1	10,000 - 20,000	2	
		CH2	5,000 - 10,000	1	
		CH3	1,000 - 5,000	0	0
		CH4	200 - 1,000	-1	
CH5	< 200	-2			
1.2	Transport Links, service buses, popular HGV route, eg milk tankers	regular bus service or HGV route		2	2
		Main access to Bus Depot		2	
		Infrequent local bus service or HGV rt		1	
		taxi links, occasional HGV route		0	
		no service rare HGV		-2	
1.3	Link to other County	where treated by neighbour county		2	
		others		0	0
2	Impact on the Community				
2.1	Size of settlement	>500 properties		2	
		250 - 500 properties		1	
		50 - 250 properties		0	0
		<50 properties		-2	
2.2	Proximity of emergency facility	adjacent to or main access		2	
		other		0	0
2.3	Severance of settlement from main network	single access to settlement		2	2
		where alternative exists		0	
2.4	Maintain continuity	existing routes		2	2
		others		0	
2.5	Adjacent to school on an incline without footway provision	complies with criteria		2	
		does not comply with criteria		0	0
3	Economic Factor				
3.1	Access to major employment centre (Industrial Estate, Hospital, School, Offices etc)	single or main access, >50 employees		2	2
		single or main access, 25 - 50 employees		1	
		alternative access		0	
		no employments centre		-2	
3.2	Access to centre of distribution or retail	single or main access to		2	
		alternative access		0	
		no centre of dist. or retail		-2	-2
4	Impact on Safety				
4.1	Risk Assessment 3 x 2 matrix	score of 6		2	
		score of 5		1	1
		score of 4		0	
		score of 3		-1	
		score of 2		-2	
4.2	Accident records	assess accident data		2	
		no accidents		0	0
4.3	Topographical Factor (Altitude above sea level)				
	High Mountainous Routes	>=300m		2	
	Highland routes	>=200m and <300m		1	
	Medium high routes	>=100m and <200m		0	
	Valley inland routes	>=50m and <100m		-1	-1
	Lowland routes	<50m		-2	
5	NMWTRA alternative routes				
5.1		route forms part of NMWTRA alternative route		2	
		route does not form part of NMWTRA alternative route		0	0
					6

CYNGOR SIR CEREDIGION COUNTY COUNCIL

Adroddiad i'r: Cabinet

Dyddiad y Cyfarfod: 3 Medi 2024

Teitl: Gwasanaeth y Gaeaf

Pwrpas yr adroddiad: Rhoi adborth yn dilyn cyfarfod y Pwyllgor Trosolwg a Chraffu Cymunedau Ffyniannus ar 11 Gorffennaf 2024

Cefndir:

Ystyriwyd yr Adroddiad ynghylch Gwasanaeth y Gaeaf a oedd yn rhoi adolygiad cyflawn o Wasanaeth y Gaeaf i aelodau'r Pwyllgor. Darparwyd cyflwyniad Pwynt Pŵer.

Argymhelliad / Argymhellion:

CYTUNWYD i argymell i'r Cabinet gymeradwyo'r matrices asesu diwygiedig er mwyn cyd-fynd â'r Cod Ymarfer newydd cymeradwy ar gyfer y Polisi Arolygu Diogelwch Priffyrdd a Chywiro Diffygion. Roedd hyn yn cynnig cydymffurfiaeth uwch a chadarn i'r Cyngor o ran ei ddyletswydd o dan Adran 41(1) o'r Ddeddf Priffyrdd (1980).

Pennir sgôr newydd o +1 fel y trothwy ar gyfer penderfynu ynghylch hyd y llwybrau sy'n cael eu trin ymlaen llaw, yn dilyn adolygiad.

Y Cyngorydd Marc Davies
Cadeirydd y Pwyllgor Trosolwg a Chraffu Cymunedau Ffyniannus